



# NEWS RELEASE FROM CONGRESSMAN KEVIN BRADY

Eighth District, Texas

FOR IMMEDIATE RELEASE  
July 15, 2009

Contacts: [Tracee Evans](#)  
(202) 374-9377  
[Ryan Tronovitch](#)  
(202) 538-5118

## BAFFLING FLOW CHART *Public Gets Peek at Complicated Bureaucracy in Democratic Health Care Plan*

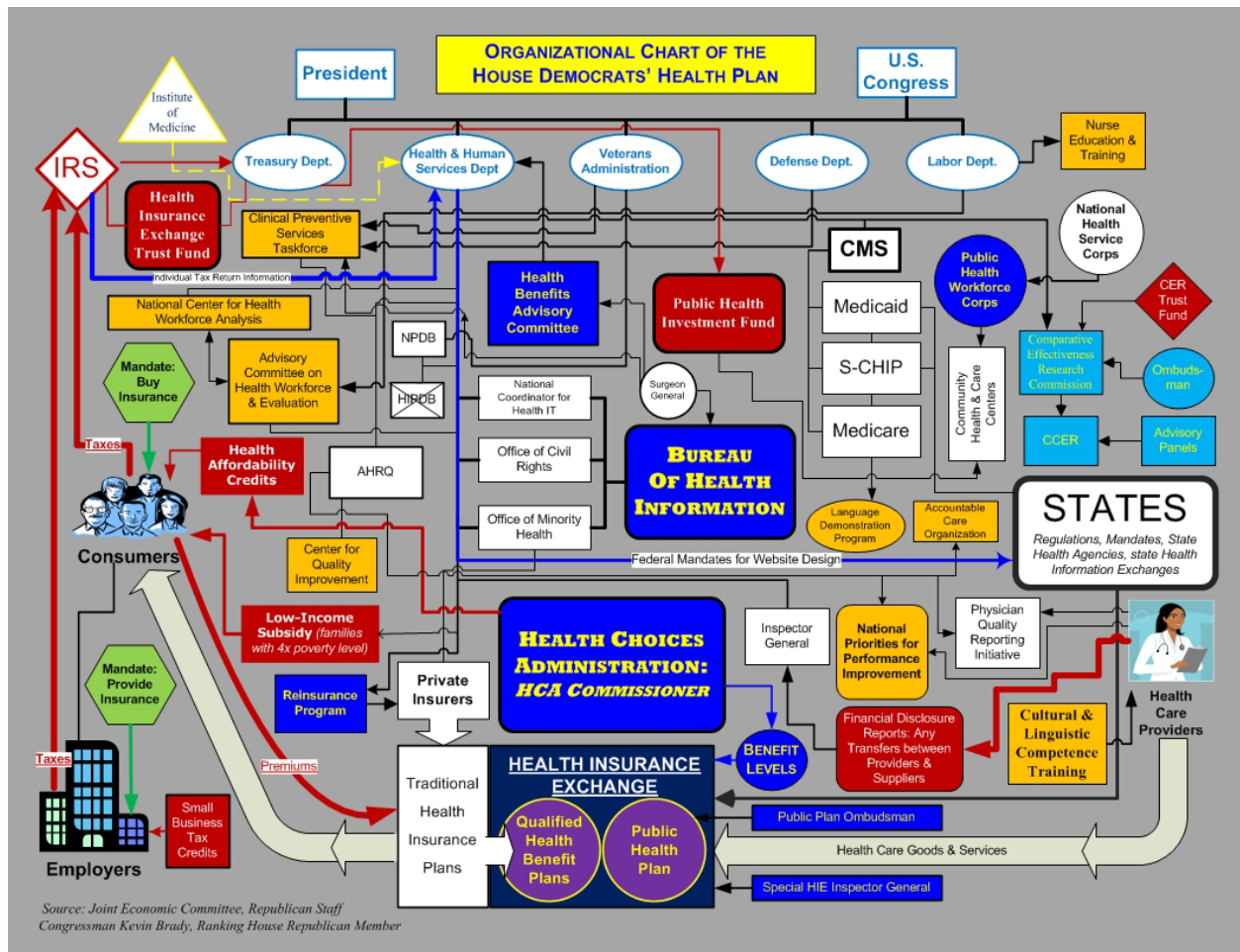
WASHINGTON, D.C. – Congressman Kevin Brady (R-TX), the lead House Republican on the Joint Economic Committee, today unveiled a detailed flow chart of the complex health care reform proposal by Democratic congressional leaders.

The chart identifies at least 31 new federal programs, agencies, commissions and mandates that accompany the unprecedented government takeover of health care in America.

“Why should any patient be forced to give control of their health care over to this Faustian pit of Washington bureaucracy?” asked Brady.

“This government takeover has only one guaranteed result: to tell Americans what doctors you can see, what treatments you deserve and what medicines you can have.”

The attached chart depicts how the health care system would be organized at the national level if the Democrats’ plan became law. These new levels of bureaucracy, agencies, organization and programs will all be put directly between the patient and their health care.



Courtesy of the Joint Economic Committee  
Kevin Brady, lead House Republican

#####

Ryan Tronovitch  
Deputy Press Secretary  
Congressman Kevin Brady (TX-08)  
(202) 225-4901 - Office  
(202) 538-5118 - Cell  
[www.house.gov/Brady](http://www.house.gov/Brady)